



**Enterprise**



Security and efficiency  
for enterprises



Enterprises grapple with diverse security needs, multi-location complexities, and a shifting hybrid-work landscape.

**IDCUBE delivers a Physical Access Control System (PACS) that seamlessly balances localization with standardization and security with convenience. Our cloud and on-prem solutions deliver cost-optimization, reduce physical touchpoints, enable centralized monitoring with data security, and promote sustainability.**



# BENEFITS



## Simplification

Simplify with an open platform, mix-and-match credentials, devices, or apps, eliminating complex middleware, bridges, and connectors



## Elevate Security

Shift from reactive to proactive and preventive with advanced AI analytics and comprehensive end-to-end encryption measures



## Brand Enhancement

Enhance your organization's brand perception with a secure, welcoming environment, automated processes, and eco-conscious initiatives



## Boost Productivity

With automation and integration, reduce your employees' onboarding time from 2 weeks to 2 minutes



## Green Initiative

Promote sustainability, reduce energy consumption, and meet environmental standards for a future-forward Enterprise



## Cost Savings

Reduce your access control operations cost by 80% with mobile credentials and the cloud platform

# FEATURES



## Identity Matrix

Streamline user roles for PACS, managing relationships and access of employees, contractors, and visitors.

## Safety First

Effective emergency response with single-click lockdown, evacuation modes, and real-time headcount.

## AI Sentinel

Utilize AI to detect anomalies and insider threats for preemptive and proactive risk management.

## Manage Evolving Identities

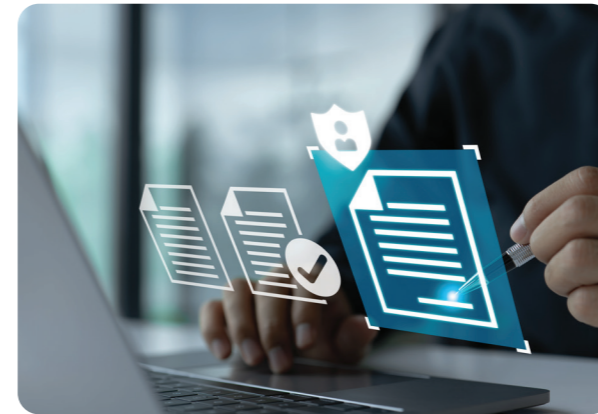
Seamlessly handle all forms of physical, biological, and virtual identities for comprehensive access control.

## GreenID Mobile App

Unite access control, time tracking, and visitor management for eco-friendly practices, aligning with ISO14001, Energy Star, LEED, EPA, and PUE standards.

## Streamlined Visitor Management

Pre-register visitors and issue QR e-passes with multi-level approvals and unique visitor stories.



## Fort Knox Security

Ensure data security compliance with ISO 27001 & 27018, SOC2, GDPR, PCI-DSS, HIPAA, and NIST-SP 800-53.

## Integration Powerhouse

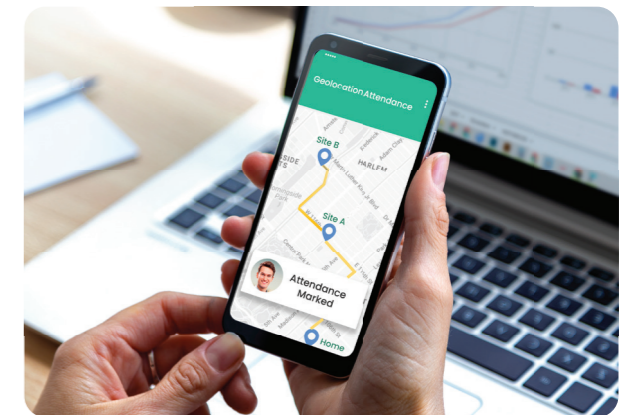
Seamlessly integrate with HRMS, ERPs, and SSO systems for synchronized data, streamlined onboarding, and organizational efficiency.

## Global Management

Empower administrators with precise role customization to efficiently manage diverse businesses and facilities across locations.

## Time & Attendance

Ensure precise time-tracking for modern hybrid workspaces, covering all five work scenarios with geo-fencing and tagging.



## Smooth and Secure Vehicle Access

Simplify vehicle access management with UHF, active RFID key fobs, and ANPR for smooth authorized entry and exit.

## Global Access Control

Enable seamless movement of shared access groups and visiting employee options for efficient access management across diverse locations.

## We built the World's first AI-powered operating system for physical Access Control — **Access360**.

The OS provides comprehensive support for a wide range of physical identities, encompassing legacy credentials like smartcards and biometrics, as well as virtual ones such as mobile credentials and QR codes. This enables secure and agile authentication of diverse entities across various facilities.

**4,413**

Facilities secured

**14**

Global fortune  
500 customers

**200**

Metro rail stations

**35**

Airports

**25**

Countries served

**150K**

End devices

### USA

**IDCUBE Corporation**  
20, Corporate Place South,  
2nd Floor, Piscataway,  
New Jersey – 08854  
USA

Toll-free number: (833) 703-1765

**IDCUBE Inc.**  
691 S Milpitas Blvd  
Ste 217 Milpitas  
CA 95035  
USA

### UAE

**IDCUBE FZE**  
Techno Hub 1 – Office  
G 042 Dubai Silicon  
Oasis Dubai,  
UAE

### INDIA

**IDCUBE Identification Systems**  
(P) Ltd B-19, Sector-2,  
Noida-201301 Uttar Pradesh,  
INDIA  
Phone: (120)-4130715